



Tasman Extension Project Environmental Impact Statement

ATTACHMENT 5

COMMUNITY CONSULTATION

ABOUT DONALDSON COAL

Donaldson Coal owns the Tasman Underground Mine, Abel Underground Mine and Donaldson Mine in the Newcastle Coalfield. Donaldson Coal is a wholly owned subsidiary of Gloucester Coal Ltd.

Donaldson Coal has been operating for more than 10 years with a strong environmental management record.

Donaldson Coal's operations have created more than 350 local jobs, and indirectly hundreds of other jobs are supported

through the use of local contractors and service providers.

Donaldson Coal actively supports local communities. Since 2001 the Donaldson Job Creation Trust has allocated \$1 million to job training and education. As part of Donaldson Coal's commitments for the Abel Underground Mine, the Donaldson Community Welfare Trust provided \$250,000 over five years to education and community needs such as the "News in Education" program and the Donaldson Conservation Trust has allocated \$1 million for local conservation projects over 10 years.

TASMAN UNDERGROUND MINE

The Tasman Mine is an underground coal mining operation approximately 20 km west of the Port of Newcastle, in the Newcastle Coalfield. The pit top for the Tasman Underground Mine is located on George Booth Drive, Seahampton.

Construction at the Tasman Underground Mine commenced in May 2006 and underground mining began in September 2006

The Tasman Underground Mine produces approximately 975,000 tonnes per year of run-of-mine (ROM) coal using bord and pillar mining methods with a combination of total and partial extraction.

OVERVIEW OF THE TASMAN EXTENSION PROJECT

The Tasman Extension Project is a proposed extension of underground mining operations at the Tasman Underground Mine for an additional operational life of approximately 15 years.

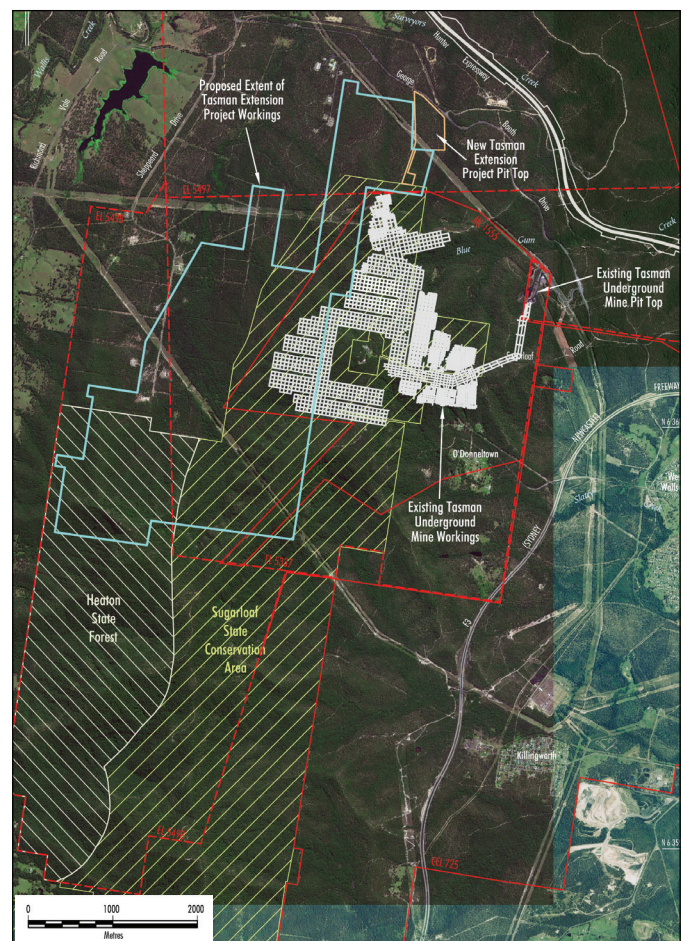
The Tasman Extension Project would include the following key components:

- continued underground mining of the Fassifern Seam using a combination of total and partial pillar extraction methods within the existing Mining Lease (ML) 1555;
- underground mining of the West Borehole Seam using a combination of total and partial pillar extraction methods;
- production of run-of-mine (ROM) coal up to 1.5 million tonnes per annum (Mtpa);
- development of a new pit top, ventilation infrastructure and associated ROM coal handling infrastructure off George Booth Drive; and
- continued transport of ROM coal to the Bloomfield CPP via trucks on George Booth Drive and John Renshaw Drive.

As required under NSW legislation, Donaldson Coal would seek approval under the *Environmental Planning and Assessment Act, 1979* for the Tasman Extension Project. The flowchart over the page provides a summary of the process.

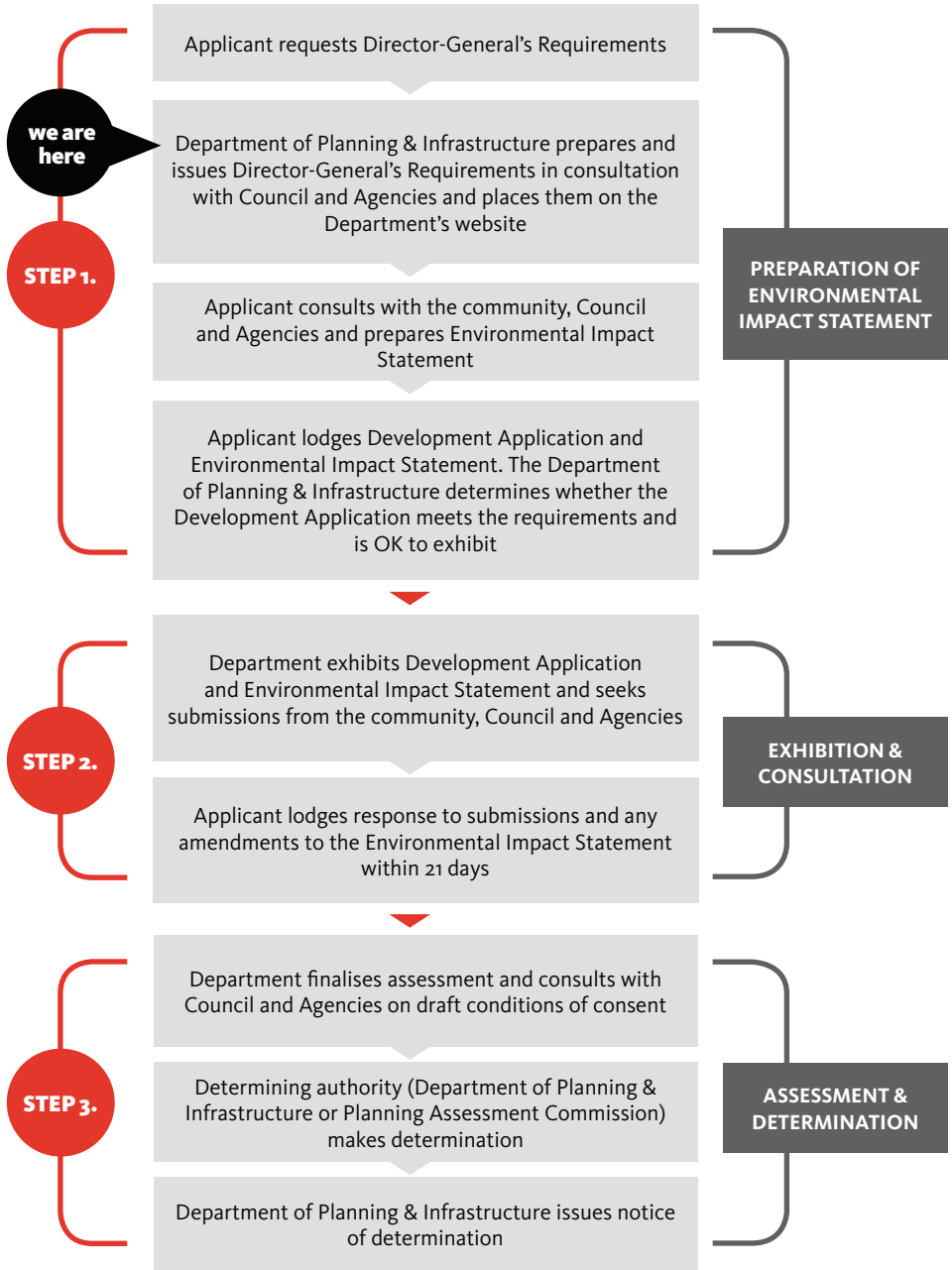
Donaldson Coal submitted a Request for Director-General's Requirements and supporting Project Description and Preliminary Environmental Assessment in October 2011.

An Environmental Impact Statement (EIS) is being prepared by recognised experts to determine the environmental, social and economic effects of the Project. The EIS will be prepared in consultation with the community, relevant State, Federal and Local government agencies and other relevant stakeholders.



State Significant Development Assessment Typical Steps

Under Division 4.1 of Part 4 of the *Environmental Planning and Assessment Act, 1979*



COMMUNITY CONSULTATION

Ongoing community consultation will include information leaflets (such as this), meetings with groups and/or individual landholders and provision of Project information on the website.

The Tasman Mine Community Consultative Committee (CCC) will also be kept informed with the status of the Project.

ABOUT THE MINE SUBSIDENCE BOARD

The NSW Government Mine Subsidence Board operates for the community in coal mining areas and is responsible for administering the Mine Subsidence Compensation Act.

The Mine Subsidence Board provides compensation for the repair of structures, such as houses, sheds, pools and fences, that are damaged by subsidence impacts caused by the extraction of coal in NSW.

Further information on mine subsidence and role of the Mine Subsidence Board is available online and at the Newcastle District Office:

www.minesub.nsw.gov.au
 Ground Floor, 117 Bull Street
 Newcastle West 2303
 Ph. (02) 4908 4300

TASMAN UNDERGROUND MINE ENVIRONMENTAL AND COMMUNITY ENQUIRIES

Environmental Enquiries:
 Phil Brown
 Environmental Manager
 Phone: 1800 111 271

Community Enquiries:
 Adam Heeney
 Community Liaison Officer
 Phone: 0400 446 700

For more information on Donaldson Coal, please visit:
www.gloucestercoal.com.au



ABOUT DONALDSON COAL

Donaldson Coal owns the Tasman Underground Mine, Abel Underground Mine and Donaldson Mine in the Newcastle Coalfield. Donaldson Coal is a wholly owned subsidiary of Gloucester Coal Limited.

Donaldson Coal has been operating for more than 10 years with a strong environmental management record.

The existing Tasman Mine is an underground coal mining operation approximately 20 km west of the Port of Newcastle, in the Newcastle Coalfield. The pit top for the Tasman Underground Mine is located on George Booth Drive, Seahampton.

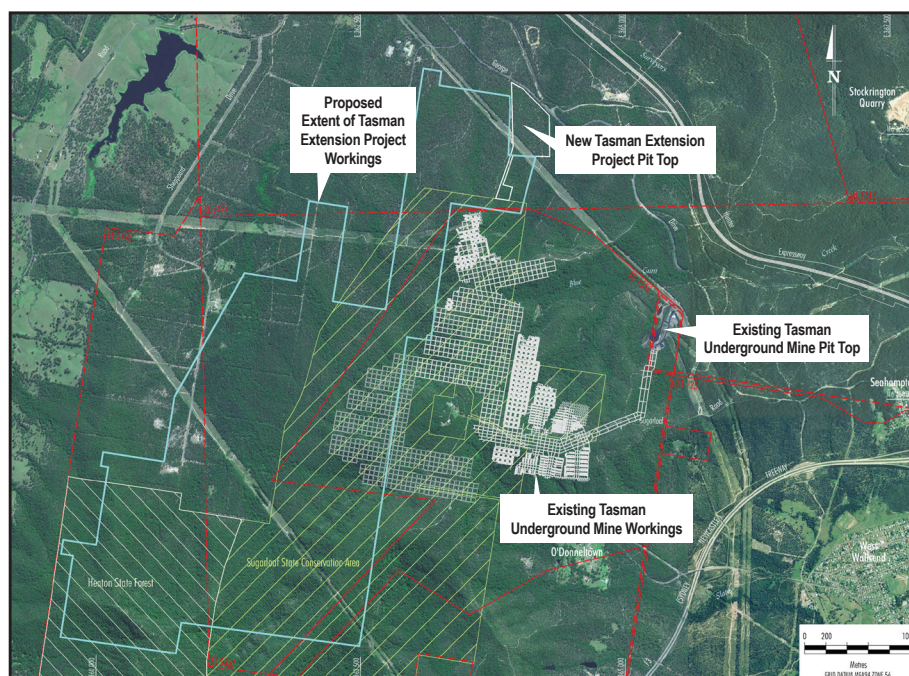
OVERVIEW OF THE TASMAN EXTENSION PROJECT

The Tasman Extension Project is a proposed extension of underground mining operations at the Tasman Underground Mine for an additional operational life of approximately 15 years.

The Tasman Extension Project would include the following key components:

- continued bord and pillar underground mining of the Fassifern Seam using a combination of total and partial pillar extraction methods within the existing Mining Lease (ML) 1555;
- bord and pillar underground mining of the West Borehole Seam using a combination of total and partial pillar extraction methods;
- production of run-of-mine (ROM) coal up to 1.5 million tonnes per annum (Mtpa);
- development of a new pit top, ventilation infrastructure and associated ROM coal handling infrastructure off George Booth Drive; and
- continued transport of ROM coal to the Bloomfield CPP via trucks on George Booth Drive and John Renshaw Drive.

As required under NSW legislation, Donaldson Coal would seek approval under the *Environmental Planning and Assessment Act, 1979* for the Tasman Extension Project.



COMMUNITY INFORMATION SESSIONS

Donaldson Coal will be holding Community Information Sessions at Valley Fresh Flowers to discuss the Tasman Extension Project. All members of the local community with an interest in the Project are welcome to attend.

The information sessions are an opportunity to learn more about the Project and how Donaldson Coal will be designing the mine plan to manage subsidence impacts on the built and natural environment. Information regarding transport of coal on George Booth Drive and John Renshaw Drive will also be available.

Donaldson Coal representatives involved in the preparation of the Environmental Impact Statement will be available for one-on-one discussions.

KEY INFORMATION

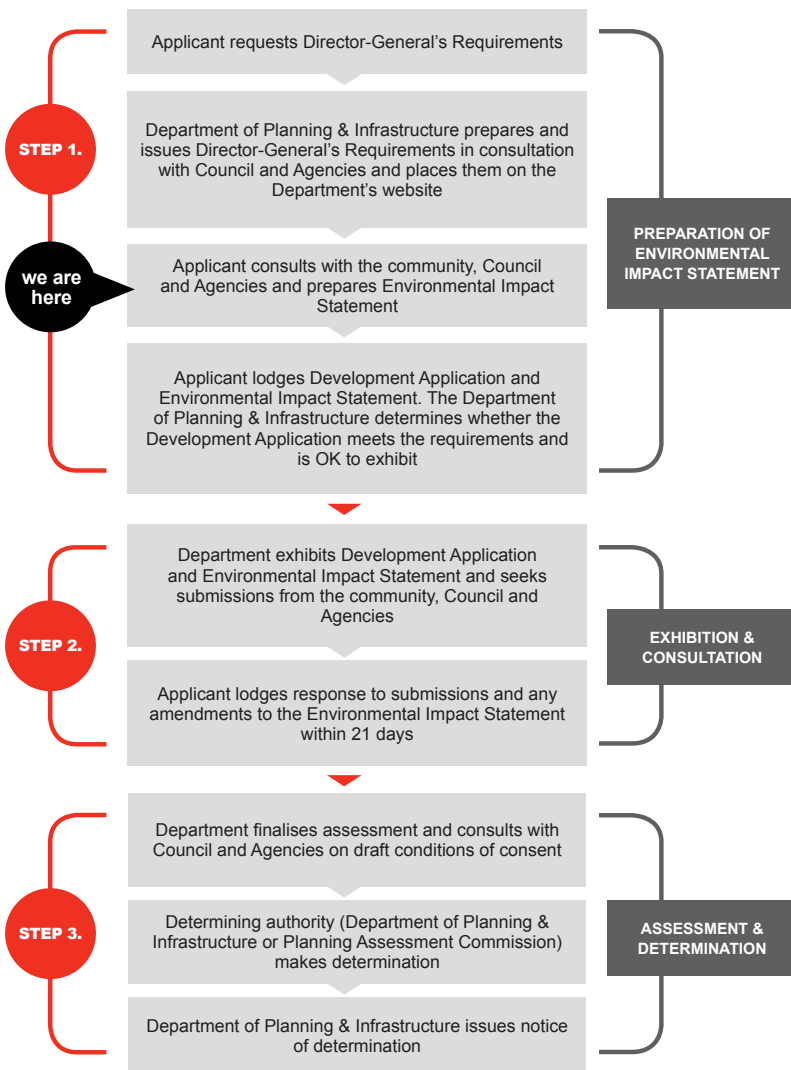
Location: Valley Fresh Flowers, 1413 George Booth Drive, Buchanan

When: Wednesday 1 February, 6.30 pm – 8.30 pm
Thursday 2 February, 6.30 pm – 8.30 pm

Refreshments will be provided at the information sessions. For further information, please contact Phil Brown or Adam Heeney (contact details over page).

State Significant Development Assessment Typical Steps

Under Division 4.1 of Part 4 of the *Environmental Planning and Assessment Act, 1979*



STATUS OF ENVIRONMENTAL STUDIES

The Department of Planning and Infrastructure has issued its Director-General's Requirements for the Environmental Impact Statement that outlines the level of assessment required for each environmental issue. The Director-General's Requirements for the Tasman Extension Project are available on the Department of Planning and Infrastructure's Major Projects website (<http://majorprojects.planning.nsw.gov.au>). The Director-General's Requirements include input from other State government agencies and Local Councils.

An Environmental Risk Assessment has been undertaken with specialist consultants from all relevant fields for the Tasman Extension Project. The Environmental Risk Assessment has identified key issues associated with the Tasman Extension Project and will guide the specialist studies being conducted for the Environmental Impact Statement.

Specialist studies being conducted for the Environmental Impact Statement include:

- Subsidence Assessment – Ditton Geotechnical Services.
- Surface Water Assessment – Evans & Peck.
- Groundwater Assessment – RPS Aquaterra.
- Flora, Fauna and Aquatic Ecology Assessments – HunterEco, Biosphere Environmental Consultants and FRC Environmental.
- Aboriginal Cultural Heritage Assessment – South East Archaeology.
- Road Transport Assessment – Halcrow.
- Noise and Air Quality Assessments – SLR Consulting and PAE Holmes.
- Socio-economic Assessment – Gillespie Economics.

COMMUNITY CONSULTATION

Ongoing community consultation will include information leaflets (such as this), meetings with groups and/or individual landholders and provision of Project information on the website.

The Tasman Underground Mine Community Consultative Committee (CCC) will also be kept informed with the status of the Project. Minutes from the CCC meetings are publicly available on the website (www.gloucestercoal.com.au).

Additional community information sessions will be conducted following the completion of the specialist studies for the Environmental Impact Statement.

The Environmental Impact Statement will be placed on public exhibition following its submission to the Department of Planning.

The Department of Planning will advertise the public exhibition and members of the public will be able to provide submissions.

TASMAN UNDERGROUND MINE ENVIRONMENTAL AND COMMUNITY ENQUIRIES

Environmental Enquiries:

Phil Brown
Environmental Manager
Phone: 1800 111 271

Community Enquiries:

Adam Heeney
Community Liaison Officer
Phone: 0400 446 700

For more information on Donaldson Coal, please visit:
www.gloucestercoal.com.au



Part of Gloucester Coal

ABOUT DONALDSON COAL

Donaldson Coal operates the Tasman Underground Mine, Abel Underground Mine and Donaldson Mine in the Newcastle Coalfield.

Donaldson Coal has been operating for more than 10 years with a strong environmental management record.

The existing Tasman Mine is an underground coal mining operation approximately 20 km west of the Port of Newcastle, in the Newcastle Coalfield. The pit top for the Tasman Underground Mine is located on George Booth Drive, Seahampton.

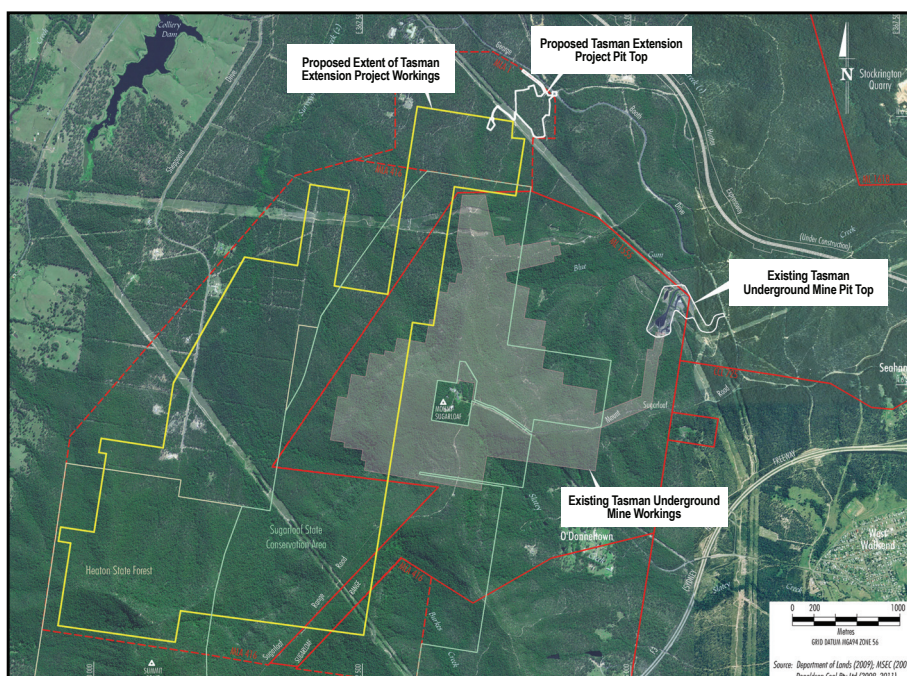
OVERVIEW OF THE TASMAN EXTENSION PROJECT

The Tasman Extension Project is a proposed extension of underground mining operations at the Tasman Underground Mine for an additional operational life of approximately 15 years.

The Tasman Extension Project includes the following key components:

- continued bord and pillar underground mining of the Fassifern Seam using a combination of total and partial pillar extraction methods within the existing Mining Lease (ML) 1555;
- bord and pillar underground mining of the West Borehole Seam using a combination of total and partial pillar extraction methods;
- production of run-of-mine (ROM) coal up to 1.5 million tonnes per annum (Mtpa);
- development of a new pit top, ventilation infrastructure and associated ROM coal handling infrastructure off George Booth Drive; and
- continued transport of ROM coal to the Bloomfield CPP via trucks on George Booth Drive and John Renshaw Drive.

Donaldson Coal has lodged an application under the *Environmental Planning and Assessment Act, 1979* for the Tasman Extension Project.



COMMUNITY INFORMATION SESSIONS

Donaldson Coal will be holding another round of Community Information Sessions at Valley Fresh Flowers to discuss the Tasman Extension Project. All members of the local community with an interest in the Project are welcome to attend.

The information sessions afford an opportunity to learn about the results of the specialist studies for the Environmental Impact Statement and Donaldson Coal's management commitments for the Tasman Extension Project.

Donaldson Coal representatives involved in the preparation of the Environmental Impact Statement will be available for "one-on-one" discussions.

KEY INFORMATION

Location: Valley Fresh Flowers, 1413 George Booth Drive, Buchanan

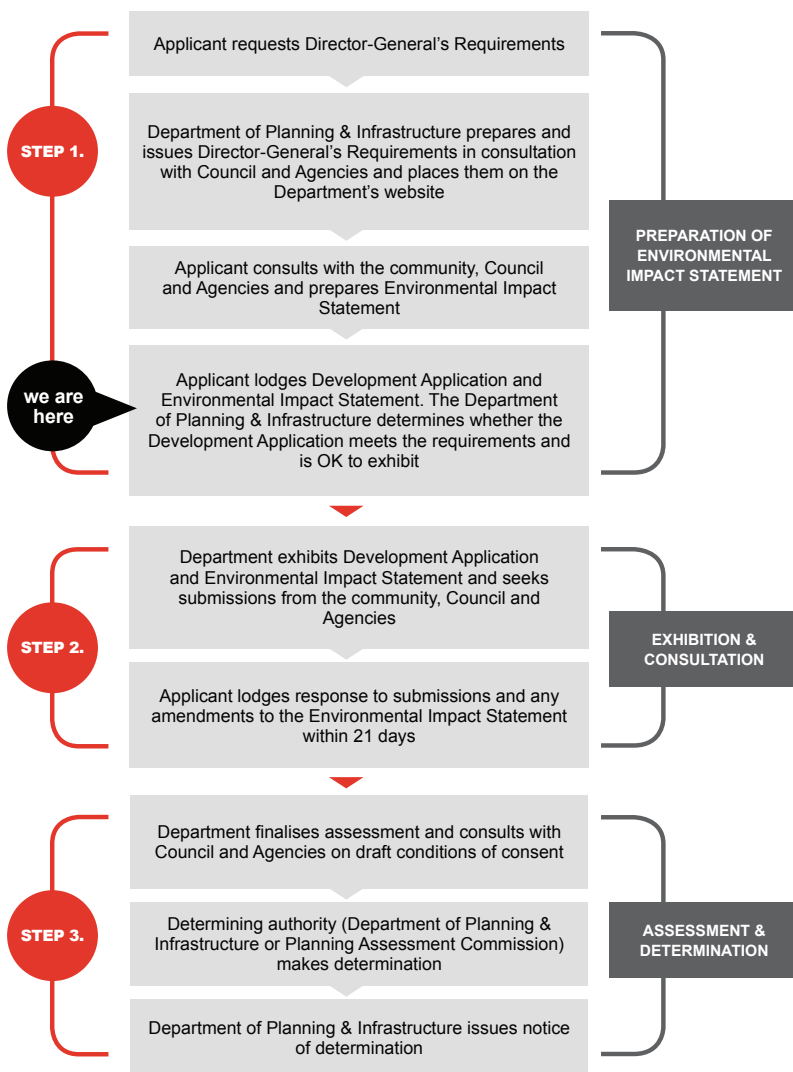
When: Tuesday 26 June, 5.30 pm - 8.30 pm

Wednesday 27 June, 5.30 pm - 8.30 pm

Refreshments will be provided at the information sessions. For further information, please contact Phil Brown or Adam Heeneey (contact details overleaf).

State Significant Development Assessment Typical Steps

Under Division 4.1 of Part 4 of the *Environmental Planning and Assessment Act, 1979*



PROPOSED DRIVEWAY UPGRADES ON GEORGE BOOTH DRIVE

Following community feedback at the last community information sessions, Donaldson Coal commissioned GHD to undertake an inspection and safety review of driveways on George Booth Drive between John Renshaw Drive and Richmond Vale Road.

This review indicated a number of supplementary improvements could be made to further improve road safety for private vehicles turning onto and off George Booth Drive at, or in the vicinity of, the majority of these driveways. Some of the improvement works that have been identified include:

- providing additional or extended sealed shoulder widening for vehicles making a left turn into private driveways;
- providing additional widening of the shoulders for vehicles passing a vehicle making a right-hand turn into a private driveway; and
- trimming or removing vegetation that obscures sight lines.

The private driveways inspected and the suggested treatments for each driveway are detailed in the Environmental Impact Statement and can also be discussed at the community information sessions.

Donaldson Coal has committed to implementing the identified private driveway safety improvement works within one year of obtaining Development Consent for the Project (subject to any required landholder consent and necessary environmental approvals being obtained).

STATUS OF ENVIRONMENTAL IMPACT STATEMENT

The environmental studies for the Tasman Extension Project have been completed and an Environmental Impact Statement has been lodged with the Department of Planning and Infrastructure.

The Environmental Impact Statement includes assessment of potential impacts and proposed management measures for a range of environment and social issues including: subsidence impacts on residences and other built features; water resources; ecology; road safety and efficiency; and amenity.

Following an initial review by the Department of Planning and Infrastructure, the Environmental Impact Statement will be placed on public exhibition. The Department of Planning and Infrastructure will advertise the timing of the public exhibition and viewing locations. During this time, members of the public will be able to provide submissions on the Environmental Impact Statement.

TASMAN UNDERGROUND MINE ENVIRONMENTAL AND COMMUNITY ENQUIRIES

Environmental Enquiries:

Phil Brown
Environmental Manager
Phone: 1800 111 271

Community Enquiries:

Adam Heeney
Community Liaison Officer
Phone: 0400 446 700

For more information on Donaldson Coal, please visit:
www.gloucestercoal.com.au

