

ABOUT DONALDSON COAL

Donaldson Coal owns the Tasman Underground Mine, Abel Underground Mine and Donaldson Mine in the Newcastle Coalfield. Donaldson Coal is a wholly owned subsidiary of Gloucester Coal Limited.

Donaldson Coal has been operating for more than 10 years with a strong environmental management record.

The existing Tasman Mine is an underground coal mining operation approximately 20 km west of the Port of Newcastle, in the Newcastle Coalfield. The pit top for the Tasman Underground Mine is located on George Booth Drive, Seahampton.

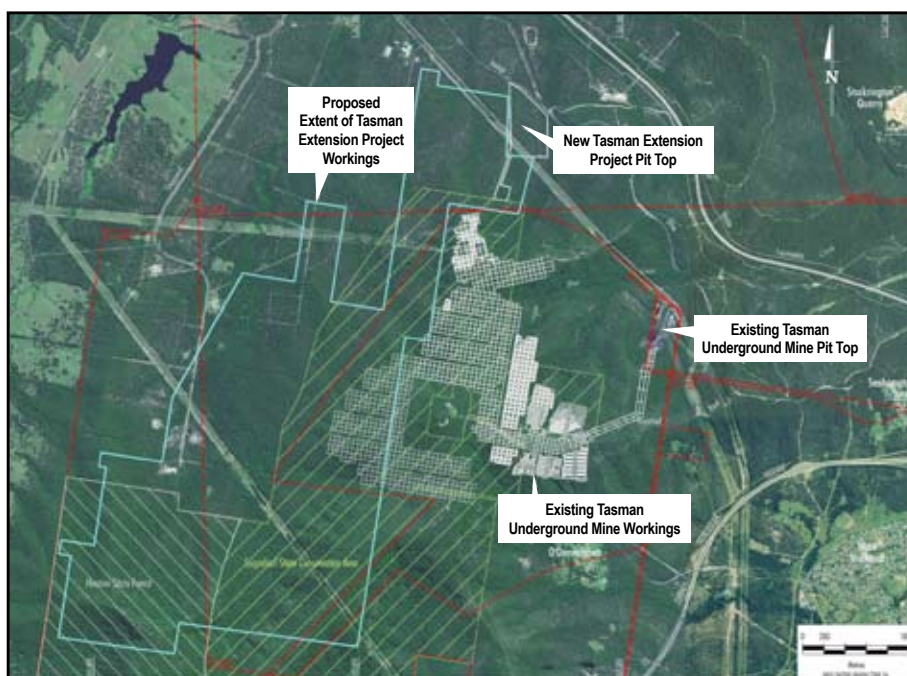
OVERVIEW OF THE TASMAN EXTENSION PROJECT

The Tasman Extension Project is a proposed extension of underground mining operations at the Tasman Underground Mine for an additional operational life of approximately 15 years.

The Tasman Extension Project would include the following key components:

- continued bord and pillar underground mining of the Fassifern Seam using a combination of total and partial pillar extraction methods within the existing Mining Lease (ML) 1555;
- bord and pillar underground mining of the West Borehole Seam using a combination of total and partial pillar extraction methods;
- production of run-of-mine (ROM) coal up to 1.5 million tonnes per annum (Mtpa);
- development of a new pit top, ventilation infrastructure and associated ROM coal handling infrastructure off George Booth Drive; and
- continued transport of ROM coal to the Bloomfield CPP via trucks on George Booth Drive and John Renshaw Drive.

As required under NSW legislation, Donaldson Coal would seek approval under the *Environmental Planning and Assessment Act, 1979* for the Tasman Extension Project.



COMMUNITY INFORMATION SESSIONS

Donaldson Coal will be holding Community Information Sessions at Valley Fresh Flowers to discuss the Tasman Extension Project. All members of the local community with an interest in the Project are welcome to attend.

The information sessions are an opportunity to learn more about the Project and how Donaldson Coal will be designing the mine plan to manage subsidence impacts on the built and natural environment. Information regarding transport of coal on George Booth Drive and John Renshaw Drive will also be available.

Donaldson Coal representatives involved in the preparation of the Environmental Impact Statement will be available for one-on-one discussions.

KEY INFORMATION

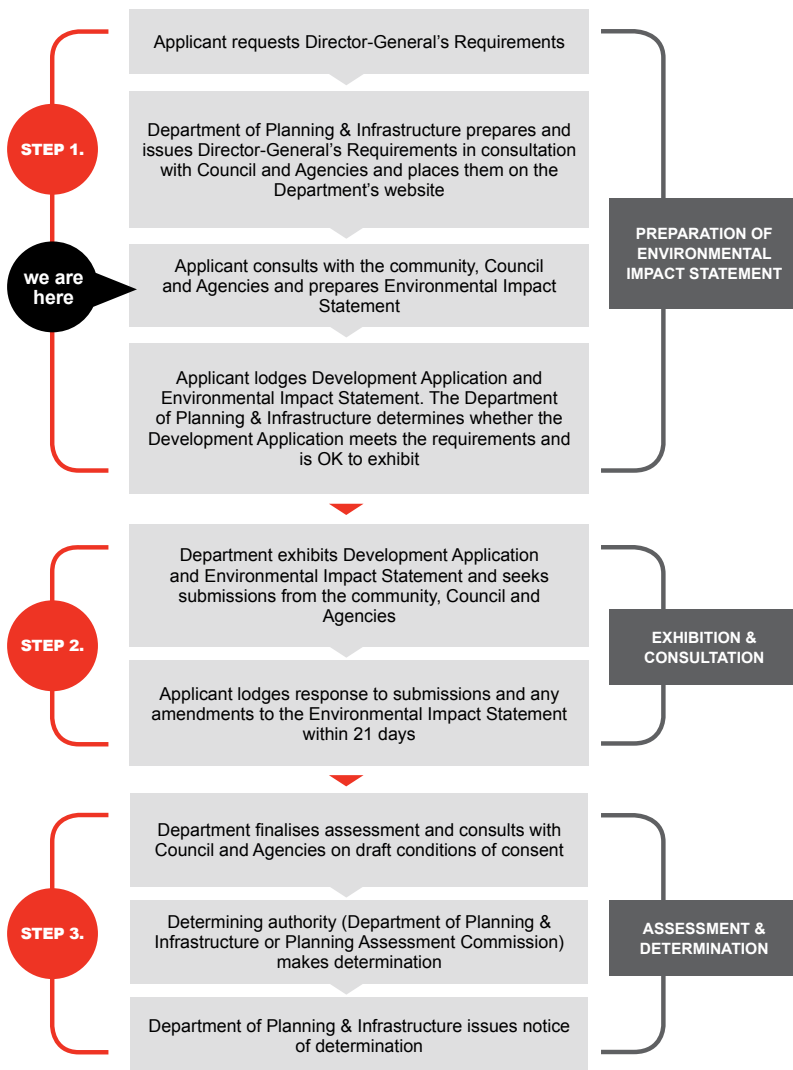
Location: Valley Fresh Flowers, 1413 George Booth Drive, Buchanan

When: Wednesday 1 February, 6.30 pm – 8.30 pm
Thursday 2 February, 6.30 pm – 8.30 pm

Refreshments will be provided at the information sessions. For further information, please contact Phil Brown or Adam Heeneey (contact details over page).

State Significant Development Assessment Typical Steps

Under Division 4.1 of Part 4 of the *Environmental Planning and Assessment Act, 1979*



STATUS OF ENVIRONMENTAL STUDIES

The Department of Planning and Infrastructure has issued its Director-General's Requirements for the Environmental Impact Statement that outlines the level of assessment required for each environmental issue. The Director-General's Requirements for the Tasman Extension Project are available on the Department of Planning and Infrastructure's Major Projects website (<http://majorprojects.planning.nsw.gov.au>). The Director-General's Requirements include input from other State government agencies and Local Councils.

An Environmental Risk Assessment has been undertaken with specialist consultants from all relevant fields for the Tasman Extension Project. The Environmental Risk Assessment has identified key issues associated with the Tasman Extension Project and will guide the specialist studies being conducted for the Environmental Impact Statement.

Specialist studies being conducted for the Environmental Impact Statement include:

- Subsidence Assessment – Ditton Geotechnical Services.
- Surface Water Assessment – Evans & Peck.
- Groundwater Assessment – RPS Aquaterra.
- Flora, Fauna and Aquatic Ecology Assessments – HunterEco, Biosphere Environmental Consultants and FRC Environmental.
- Aboriginal Cultural Heritage Assessment – South East Archaeology.
- Road Transport Assessment – Halcrow.
- Noise and Air Quality Assessments – SLR Consulting and PAE Holmes.
- Socio-economic Assessment – Gillespie Economics.

COMMUNITY CONSULTATION

Ongoing community consultation will include information leaflets (such as this), meetings with groups and/or individual landholders and provision of Project information on the website.

The Tasman Underground Mine Community Consultative Committee (CCC) will also be kept informed with the status of the Project. Minutes from the CCC meetings are publicly available on the website (www.gloucestercoal.com.au).

Additional community information sessions will be conducted following the completion of the specialist studies for the Environmental Impact Statement.

The Environmental Impact Statement will be placed on public exhibition following its submission to the Department of Planning.

The Department of Planning will advertise the public exhibition and members of the public will be able to provide submissions.

TASMAN UNDERGROUND MINE ENVIRONMENTAL AND COMMUNITY ENQUIRIES

Environmental Enquiries:

Phil Brown
Environmental Manager
Phone: 1800 111 271

Community Enquiries:

Adam Heeney
Community Liaison Officer
Phone: 0400 446 700

For more information on Donaldson Coal, please visit:
www.gloucestercoal.com.au

